

VEHICLE HOSE & CABLE RAMPS

Product Description

SafetyGrip vehicle ramps are designed for use around the worksite, quick and easy to deploy they offer protection for all types of Cable, Pipe and Hoses that may be running across the ground.

Each ramp is constructed from heavy duty PU rubber which provides a strong and robust solution even for heaviest vehicle movement. Designed to be load bearing up to 20,000kg axle weight, these ramps will provide safe passage for regular heavy vehicular traffic.

SafetyGrip cable and hose covers are available in several standard designs that allow 2, 3 & 5 channels for cable/hose runs, each ramp has excellent chemical and corrosion resistance properties, they are designed to withstand the demands of heavy industrial environments.

Supplied in a variety of standard sizes, with bespoke elbow and angle sections also available.

Typical Applications

- Electrical Cable Protection
- High Pressure Hose Protection
- Temporary & Fixed Access Solutions

Benefits

- Heavy Duty/High Traction
- Non-Corrosive
- Portable & Easy Installation
- For Vehicles with axle weight up to 20,000kg
- Sections lock together for longer runs
- Angled Sections

VEHICLE HOSE & CABLE RAMPS

Options

Sizes

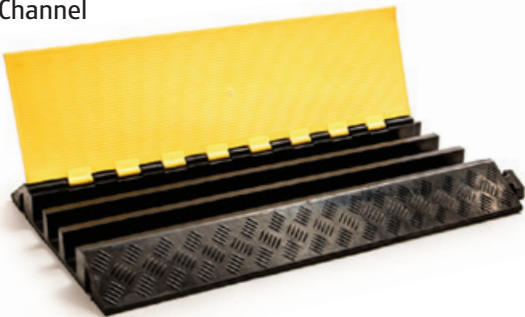
Available as double triple and quintuple slot profiles, the length is approx 1m long and they can be linked together to make longer sections.

STANDARD SIZES			
TYPE	2 CHANNEL	3 CHANNEL	5 CHANNEL
CHANNEL SIZE	35mm x 35mm	65mm x 65mm	42mm x 42mm
LENGTH	1000mm	950mm	950mm
WEIGHT	7.5kg	20kg	16kg
CAPACITY	10 ton	20 ton	15 ton
PART NUMBER	SGS-SVR-35	SGS-TVR-65	SGS-QVR-42

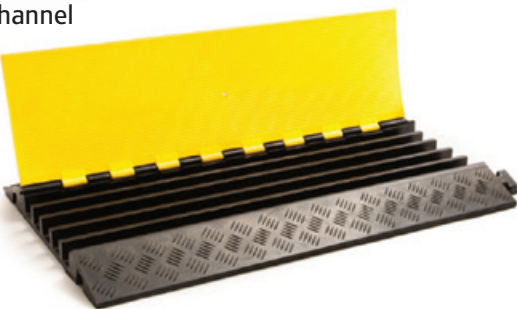
2 Channel



3 Channel



5 Channel



Installation

SafetyGrip Anti-slip Pipe & Hose Ramps are designed to be portable and used for temporary application, typically laid in place for easy removal later.

However permanent fixture can be achieved using mechanical fixings or adhesive.

Specification

Physical Data

Finish:

Rigid pre-formed shaped PU section

Tear resistance:

65.1 N/mm² (DIN53356)

Tensile Strength:

21.0 N/mm² (DIN53455)

Shore Hardness:

94A (DIN EN ISO 868)

Water/Chemical Absorption:

Less than 0.1%

Temperature Range:

-35 deg C to +95 deg C

Colours:

Typically supplied black with high visibility yellow cover/lid.

Chemical Resistance:

Various chemical compounds including most oils, petroleum based fluids and the drilling muds.

Coefficient of Friction Grip Test:

Friction test carried out using the pendulum CoF test - Result show result between 0.75 - 0.85 wet and dry.

Transportation/Classification

Anti-slip pipe & hose ramps are classed as non-hazardous and can be shipped through conventional methods.

Maintenance

Cleaning

SafetyGrip vehicle ramps should be cleaned at intermittent intervals to ensure they offer optimum performance, wash with water based detergent, stiff brush or high pressure washers/steam cleaners

If in any doubt about an application please contact SafetyGrip Technical Services on: +44(0)1224 784700 info@safetygripsolutions.com